



# User Manual

## DMPA STREAM Media Player Amplifier



# Safety instructions

When using this electronic device, basic precautions should always be taken, including the following:

- 1 Read all instructions before using the product.
- 2 Do not use this product near water (e.g., near a bathtub, washbowl, kitchen sink, in a wet basement or near a swimming pool etc). Care should be taken that objects do not fall into liquids and liquids would not be spilled on the device.
- 3 Use this device when you are sure that it has a stable base and it is fixed securely.
- 4 This product, in combination with loudspeakers may be capable of producing sound levels that could cause permanent hearing loss. Do not operate for a long period of time at a high volume level or at a level that is uncomfortable. If you experience any hearing loss or ringing in the ears, you should consult with otorhinolaryngologist.
- 5 The product should be located away from heat sources such as radiators, heat vents, or other devices that produce heat.
- 6 Note for power connections: for pluggable equipment, the socket-outlet shall be installed near the equipment and shall be easily accessible.
- 7 The power supply should be undamaged and never share an outlet or extension cord with other devices. Never leave device plugged into the outlet when it is not being used for a long period of time.
- 8 Power disconnection: when the power cord connected to the power grid is connected to the machine, the standby power is turned ON. When the power switch is turned ON, the main power is turned ON. The only operation to disconnect the power supply from the grid, unplug the power cord.
- 9 Protective Grounding - An apparatus with class I construction shall be connected to a power outlet socket with a protective grounding connection.  
Protective Earthing - An apparatus with class I construction shall be connected to a mains socket outlet with a protective earthing connection.
- 10 The lightning flash with an arrowhead symbol, with an equilateral triangle, is intended to alert the user to the presence of uninsulated dangerous voltage within the products enclosure that may be of sufficient magnitude to constitute a risk of electric shock to persons. 
- 11 The exclamation mark within an equilateral triangle is intended to alert the user to the presence of important operating and maintenance (servicing) instructions in the literature accompanying the appliance. 
- 12 There are some areas with high voltage inside, to reduce the risk of electric shock do not remove cover of the device or power supply.  
The cover should be removed by the qualified personnel only.
- 13 The product should be serviced by qualified service personnel if:
  - The power supply or the plug has been damaged.
  - Objects have fallen into or liquid has been spilled on the product.
  - The product has been exposed to rain.
  - The product has been dropped or the enclosure damaged.



**CAUTION**

**RISK OF ELECTRIC SHOCK  
DO NOT OPEN**

To reduce the risk of electric shock, do not remove screws. No user-serviceable parts inside. Refer servicing to qualified service personnel. To reduce the risk of fire, electric shock or product damage, do not expose this apparatus to rain, moisture, dripping or splashing and that no objects filled with liquids, such as vases, shall be placed on the apparatus.

# Table of contents

## Before you start

Introduction.....	2
Features.....	2

## Operation

Front panel .....	3
Rear panel.....	3
Front panel functions.....	4
Rear panel functions.....	4
Media player functions.....	6
Controlling media player using 4STREAM application.....	7
Controlling media player using WEB interface.....	10

## Specifications

General specifications.....	11
-----------------------------	----

# Before you start

The DMPA STREAM series device is a compact 1U half-rack public address mixing amplifier. It features a built-in media player designed to stream internet radio stations and music from popular services like Spotify, Tidal, and more. The music player can be controlled via an app or the front panel controls and supports both Ethernet and Wi-Fi connections.

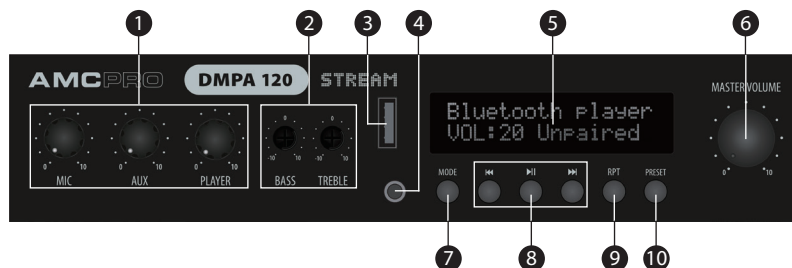
This music streamer is ideal for multiroom applications, allowing you to divide the audio system into different zones or combine them into one large system. If multiple DMPA STREAM amplifiers are installed within a building and connected to the same Ethernet network, they can work seamlessly together to create a unified audio system.

## FEATURES

- Supports up to 32 GB USB flash drives
- Bluetooth receiver
- Airplay support
- Multiroom streaming capabilities
- Supports 100 V and 2 $\Omega$  speaker installations
- DC power supply input
- High-resolution audio decoding up to 24-bit/192 kHz
- Presets for internet radio stations
- WEB user interface to control music player
- RCA Link output and AUX input
- 3-channel mixer with microphone and aux inputs
- Microphone input priority and phantom power
- Low noise PWM controlled cooling FAN
- Emergency mute
- Amplifier output with Phoenix connector

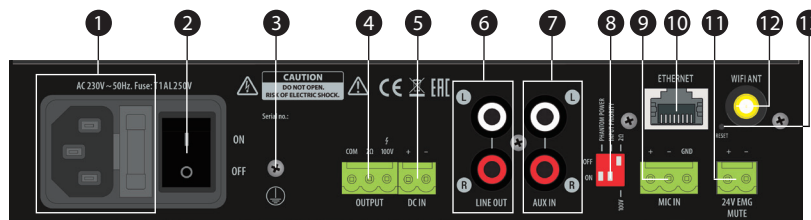
# Operation

## Front Panel



1. MIC, AUX & Media player volume | 2. Bass and treble controls | 3. USB drive input | 4. 3,5 mm AUX input | 5. LCD display | 6. Master volume  
7. Mode button | 8. Player control buttons | 9. Repeat function button | 10. Preset button

## Rear Panel



1. Mains power input & fuse holder | 2. Power switch | 3. Ground connecting point | 4. Amplifier output | 5. DC power supply input  
6. RCA LINE output | 7. RCA AUX input | 8. Phantom power and mic input priority settings | 9. Balanced microphone input  
10. RJ45 Ethernet connector | 11. 24V emergency mute connector | 12. WiFi antenna connector | 13. Device reset button

# Operation

## Front panel functions

### **MIC 1 / AUX / PLAYER LEVEL CONTROLS**

Rotary knobs for adjusting volume levels of selected channel.

### **BASS & TREBLE TONE CONTROLS**

Tone controls provide attenuation of bass and treble response. The flat position is obtained when the knobs are set to middle position. Turn the knob clockwise to raise tone level approximately +7.5 dB for bass and +10 dB for treble; turn counter-clockwise to lower tone level by approximately -7.5 dB for bass and +10 dB for treble.

### **USB DRIVE INPUT**

Music player is confirmed to handle USB drives formatted in FAT32, with a maximum capacity of 32GB

### **AUX INPUT**

The device includes a 3.5mm stereo input for connecting an auxiliary audio source. To use this input, select the "Line In" option on the media player. The volume for this input can be adjusted using the "PLAYER" level control knob on the front panel or via the app on a smartphone or tablet.

### **MASTER VOLUME**

Rotary knob for adjusting master volume.

## Rear panel functions

### **MAIN POWER CONNECTOR AND FUSE**

Power connector for mains power, combined with fuse holder. Use only the same type of fuse that is written on the device.

### **POWER SWITCH**

Switch amplifier power ON or OFF.

### **AMPLIFIER OUTPUT**

Audio outputs for Low impedance ( $2\ \Omega$ ) and 100 V speakers. Make sure that the correct speaker output is enabled by using the DIP switch located next to the microphone input. Only one output can be used at a time. Especially for small background music systems, we recommend using  $2\ \Omega$  output in order to perform the best audio quality and frequency reproduction.

Low Z output allows using  $8 \times 16\ \Omega$  loudspeakers or  $4 \times 8\ \Omega$  loudspeakers connected in parallel. Amplifier's  $2\ \Omega$  output designed without output transformer and has traditional 20 Hz-20 kHz frequency responses to sure the best possible audio quality for background.

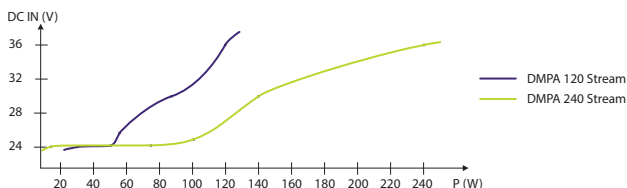
Pay attention to wiring on low Z output! Please use a minimum of 1.5 mm<sup>2</sup> cables to connect speakers to a short distance. Depending on audio line length, cable diameter must be increased in order to minimize voltage drop on cable.

### **LINE LEVEL AUDIO OUTPUT**

RCA stereo output for connecting device to external audio amplifier or other equipment. The audio level in this output is not affected by the Master volume.

# Operation

## DC POWER SUPPLY INPUT



The amplifier can be powered using an external power source that provides voltage from 24 V to 36 V DC power. This is useful for emergency situations or when AC mains power is not available. Voltage in DC input affects the maximum amplifier's power. Please check the table above. It shows the relation between the amplifier's output power and the DC input voltage.

## AUX INPUT

RCA stereo input for connecting external audio source.

## MIC INPUT

Phoenix connector for balanced microphone connection.

## PHANTOM POWER AND INPUT PRIORITY

MIC input can provide 24 V phantom power for condenser microphones. This input can also have a priority over other inputs.

## EMERGENCY MUTE

When 24 V DC current is supplied to EMG MUTE input, all device inputs (except microphone) will be muted. This is useful when using device combined with external alarm systems.

## OUTPUT IMPEDANCE SELECTOR

This selector sets up amplifier outputs depending on audio system type. 100 V mode enables output transformer and sets up amplifier circuits to adjust and amplify audio optimized for 100 V speaker lines. 2  $\Omega$  mode turn off the 100 V output transformer, in order to connect speaker lines directly from the power amplifier stage. This mode ensures the best amplifier performance and also enables 20 Hz-20 kHz frequency reproduction.

## WIFI ANTENNA

Connector for WiFi network antenna. An antenna is included with the device.

## ETHERNET CONNECTOR

Allows connect to the local Ethernet network. The device uses DHCP to assign IP addresses. The streamer WEB interface also offers the ability to disable DHCP and use a static IP address. However, we highly recommend using DHCP. If you require a static IP, we suggest configuring the router to assign the same IP address based on the streamer's unique MAC address.

# Operation

## Rear panel functions

### **RESET BUTTON**

Press the RESET button briefly to restore the factory settings of the music streamer. The reset will be confirmed by a voice prompt and the appearance of the "RESET" message on the screen. After the factory reset, the device will take a few minutes to start up. Follow the on-screen instructions to guide the setup process.

The "Connecting" message on the screen indicates that the device is ready to be connected. To connect the streamer to a Wi-Fi network, open the app and press "Add Device," followed by the "Indicator is blinking" button. The music streamer will appear in the app if the device was reset and can find the Wi-Fi network. Follow the instructions in the app to complete the setup.

We highly recommend turning off mobile data and enabling Bluetooth on your smartphone or tablet during the setup to ensure a smooth process. The smartphone or tablet and the music streamer must be connected to the same Wi-Fi network.

## Media player functions

DMPA STREAM series amplifiers have an integrated media player with network and Bluetooth 5.0 connectivity. It enables streaming music from smart devices, USB, NAS or streaming services, such as Spotify, Tidal or Qobuz in high resolution using 4STREAM app, AirPlay, Bluetooth or other third-party compatible apps. It supports streaming high quality music with sampling rates up to 24bit,192khz and supports decoding lossless audio formats such as FLAC, APE, WAV.

### **LCD SCREEN**

LCD screen displays main information about media player status: track number and time, media player volume level, music source.

### **USB FLASH DRIVE**

Supports up to 32 GB USB flash drives formatted in FAT32 file system (1024 tracks at most).

### **MODE**

Switch player between Network streaming, Line-in, Bluetooth, and USB player modes.

The USB mode only becomes available when a USB flash drive is inserted.

### **PLAY/PAUSE**

Switch player mode between play and pause.



# Operation

## Media player functions

### FORWARD / BACKWARD

Single short press in USB and Bluetooth modes will change currently playing track.

### REPEAT AND RANDOM PLAY

Select one of these modes:

- Repeat playlist
- Repeat single track
- Repeat playlist on shuffle
- Shuffle play
- Repeat playlist and shuffle play disabled

### PRESET

Press this button to open preset screen. Then press one of the buttons, on screen labeled 1 - 6 to quickly choose device preset state (full information about how to use presets is on page 8).

## Controlling media player using 4STREAM application

### APP DOWNLOAD

Download the 4STREAM application from App Store for iOS based devices and Google Play Store for Android based devices.



### CONNECTION

Option 1 - using WiFi network

1. Prepare the Amplifier: Connect the speaker to the amplifier and slightly increase the master and player volume controls. This will allow you to hear the voice prompt, making the setup easier.
2. Smartphone/Tablet Preparation: Turn off mobile data on your smartphone or tablet and enable Bluetooth. Connect your device to your Wi-Fi router in 2.4GHz mode. (After setup, you can use 5GHz Wi-Fi for control and playback.)
3. Power On: Turn on the DMPA amplifier.
4. Check the Screen: If the screen displays "connecting...", open the 4STREAM app. The app will start searching for your device. Tap the "Add Device" button.
5. Verify the Status: If the screen still shows "connecting...", click the "Indicator is blinking" button in the app. If there is no "connecting..." message on the screen, reset the device and wait for the message to appear.
6. Select the Device: In the 4STREAM app, a list of devices ready for setup will appear. Select your device and tap "Setup this device." Follow the app instructions to enter your Wi-Fi password and assign a device name.
7. If No Device Appears: Go to your smartphone or tablet's Wi-Fi settings (the app will guide you). Look for the DMPA amplifier's Wi-Fi SSID (e.g.,

# Operation

## Controlling media player with 4STREAM application

SoundSystem\_XXX) and connect to it. If no SSID is visible, press the reset button on the back panel to activate it.

**8. Complete Setup:** Return to the 4STREAM app and tap the "+" icon in the top-right corner of the device list. Follow the prompts to select your Wi-Fi network and enter your router password.

**\* Attention Android Users:** Some devices may prompt you to allow the connection to the SoundSystem Wi-Fi network without internet. Choose "yes" to complete the setup.

### Option 2 - using LAN network

1. Plug in the network cable to the RJ45 Ethernet port at the back of the amplifier, the device will show on the app in about 10 seconds.  
(Note: the smartphone or tablet and the amplifier must be in the same network.)

### Option 3 - using Bluetooth

1. Press the MODE button on the front panel, or open the 4STREAM app and select Bluetooth mode from the bottom of the music source page.
2. Enable Bluetooth on your mobile device.
3. Scan for available Bluetooth devices and pair with the device named "SoundSystem".

## DEVICE SETTINGS

In the "Device" tab tap the settings icon  to see available options:

**Rename:** to customize the device name.

**Device info / Speaker info:** you will see the device information like Mac ID, device, IP, SSID.

**Alarm clock:** Schedule device to start playing music at set time.

**Sleep timer (for Android devices only):** Set time interval after which the player will stop music playback.

**EQ:** open to control the device bass and treble.

**Audio settings (for Android devices only):** toggle music Fade-in and Fade-out option.

**Preset content:** you will see all the preset content here.

NOTE: Device settings options availability differs in iOS and Android versions.

## PLAYING MUSIC STORED LOCALLY

Click the "Browse" tab in the application and choose "My Music" option to open the music ready there:

**iPhone (for iOS devices only) / Phone:** to see your device music library.

**Home music server:** play music from your home media server (NAS).

**USB Disk:** play music from connected USB drive. Option is only visible if USB drive is connected.

NOTES: the iOS based devices have limited the access to iTunes library. DMPA Stream system only supports NAS with DLNA feature.

# Operation

## PLAYING MUSIC FROM STREAMING SERVICES

Click the "Browse" tab in the application and scroll to Music Services section to see all available streaming services. Click on the desired service icon and follow instructions to set up.

Please note, some streaming services require additional apps to be installed on your device or/and to have active user accounts to be able to use these services.

To manage the list of shown services in the 4STREAM app, click "manage" button to switch visibility On / Off for each individual service. The visibility switch does not disable service availability or delete user data, such as log-in details.

## SELECTING DEVICE AUDIO SOURCE

DMPA Stream amplifier media player has three different audio sources:

**NET / Wi-Fi:** to use streaming services or play local files via LAN or WiFi.

**Bluetooth:** to enable Bluetooth pairing and audio playing.

**Line in:** to play audio from 3,5 mm audio input located at the front panel.

**USB:** to play audio from connected USB storage. USB Player more is only available when USB storage is connected.

NOTE: Bluetooth connection with the device will be terminated once user leaves the Bluetooth mode. Pairing with the device is also only available when device is in Bluetooth mode.

## PRESETS

DMPA Stream amplifier media player can store 10 presets, allowing quick switching between different content among all streaming services. In example, a preset can start a particular Spotify playlist or play TuneIn online radio station broadcast. Each service allows different options.

### SAVING A PRESET

To save a preset, open device "Now Playing" window (choose "Device" tab and select an active device).

Tap "three dots" icon to open a menu and select "Preset" option.

Select any empty preset or a preset you wish to overwrite (if it is not empty).

### SWITCHING BETWEEN PRESETS

Open the "Browse" tab in the application and choose "Preset Content". You will see 10 preset windows with content that has been assigned to them. Empty window means the preset is empty.

### DELETING A PRESET

In "Preset content" window click "Edit" button in the upper right corner. Select one or multiple presets and tap the trash bin icon to delete.

# Operation

## USING FRONT PANEL BUTTONS TO SWITCH PRESETS


DMPA Stream has 6 buttons on the front panel (under the LCD display) that can be used to switch between presets 1 - 6.

- Press "PRESET" button. The screen will now show numbers 1 - 6 above buttons.
- Press the corresponding button to load preset 1 - 6.

If no preset is selected after pressing the "PRESET" button, the device will come back to its default state in a few seconds.

## Multiroom SETUP

Multiple DMPA Stream amplifiers can be used to create multi-zone audio setup with synchronized audio capabilities. It is also possible to link it with other media devices that use 4STREAM applications.

- To link multiple devices, make sure that every device is added and connected to your 4STREAM app via the same LAN or WiFi network.
- Open "Device" tab and click link  icon on the device, that will act as master device for all other linked devices.
- Select all devices that you wish to link together. The selected devices will now play audio in sync, all controlled by master device. All options will
- Users can assign L / R / L+R (set by default) audio channels for each device, allowing to create unique stereo setups from multiple devices.
- Line-in and Bluetooth input of master device will be shared among all other devices, meaning it is possible to transmit connected audio input signal across the local network in sync with other devices via LAN or WiFi network.

## Controlling media player using WEB interface

The DMPA music player includes a WEB interface, allowing you to control music using any internet browser. It offers additional audio settings and features comparable to those available through the App.

To access the WEB interface, simply find the device's IP address in the App and enter it into your browser's address bar. The interface will prompt you for a password, which can be updated later through the same WEB interface.

The default password is: **admin**

If you intend to use WEB interface frequently, we recommend to set-up a static IP address for the device in your WEB router and to bookmark the address in your browser.

# General Specifications

## DMPA Stream Media Player Amplifier

	DMPA Stream 120	DMPA Stream 240
Power supply	230 VAC, 50 Hz 24 VDC	
Output power	120 W	240 W
Maximum power consumption	155 W	298 W
Phantom power voltage	24 VDC	
Total harmonic distortions	< 0.4 % @ 1 kHz	
Input impedance	1k Ohms (mic/line)	
Input sensitivity	-10 dB (line), -45 dB (mic)	
S/N ratio	80 dB (line), 75 dB (mic)	
Frequency response	80 Hz - 19 kHz	
Equalizer	Bass: 140 Hz +/-7.5 dB Treble: 16 kHz +/-10 dB	
Dimensions	210 x 274 x 44 mm	210 x 360 x 44 mm
Weight	3.27 kg	4.29 kg

The specifications are correct at the time of printing this manual. For improvement purposes, all specifications for this unit, including design and appearance, are subject to change without prior notice.